

ArchiveAlign™

An Essential Tool for Enterprise Vault Administration in the Large Exchange/EV Environment



Optimize and Balance Archiving Performance after Exchange Mailbox Moves

In large Exchange environments, different events can create the need to move user mailboxes across email servers (e.g. server consolidations, employee relocations, routine maintenance, etc.)

When mailboxes are moved across Exchange servers, their corresponding Enterprise Vault archive must follow. Otherwise, users can become 'misaligned.'

CHALLENGE: Misaligned users put a strain on Enterprise Vault and affect its archiving and indexing throughput. In addition to reduced response time, decreases in archiving performance can lead to a backlog of archiving queues, which require additional administration time to resolve.

These challenges can be overcome by manually moving the affected archive to the EV server corresponding to the Exchange server where the mailbox was moved to.

However, the process of moving or 'migrating' archives manually is complex and time intensive. Additionally, this process must be applied to every Exchange mailbox that has been relocated.

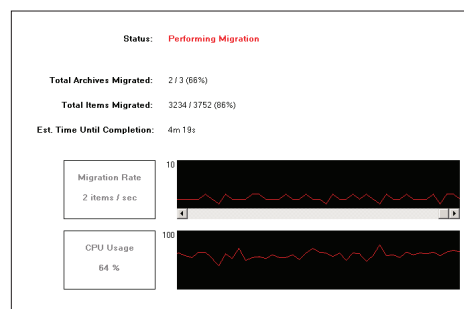
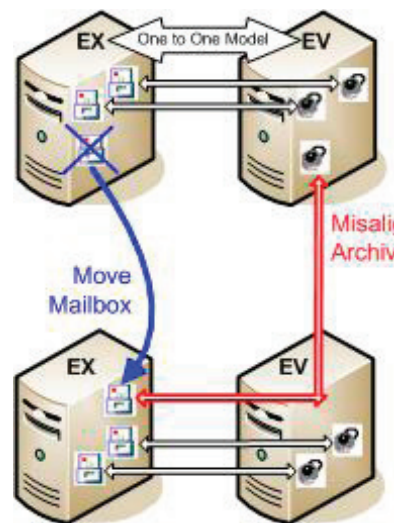
SOLUTION: ArchiveAlign automates the archive migration process and ensures that users' mailboxes and corresponding archives stay in 'alignment'.

Email administrators save significant time and effort while ensuring archive and network performance remain at optimal levels.

ArchiveAlign is a must for anyone looking to move mailboxes or consolidating Exchange or EV servers in a large Exchange / EV environment.

Licensing and Fees:

This product can be purchased under a standard software license (based on the number of Exchange users) or can be purchased as a consulting service.



EV Archive Migration Tool		
	Source	Destination
EV Archive Migration Tool		
Schedule	User 2/Exchange Vault Store	/EVAM EV2 Target
Status	User 3/Exchange Vault Store	/EVAM EV2 Target
Tasks	User 1/Exchange Vault Store	/EVAM EV2 Target
Settings		

FEATURES

- Leverages Enterprise Vault API's to deliver seamless end-to-end migration of data
- Maintains compatibility with any future versions of Enterprise Vault
- Includes robust scheduler for setting automated migration dates & times
- Handles multiple archive moves simultaneously
- Reports progress of mailbox moves and CPU usage via a status bar
- Allows 'fine tuning' of CPU usage via throttling mechanism

ABOUT GLOBANET

Globanet is Symantec's earliest and most comprehensive Enterprise Vault partner. We have led some of the biggest and most strategic Enterprise Vault deployments.

In addition to a seasoned implementation team, Globanet operates **one of the largest Enterprise Vault software development teams in the world.** We have both customized Enterprise Vault to meet specific client requirements, and have developed our own set of proprietary tools that extend and improve on Enterprise Vault's core functionality.



LOS ANGELES
14724 Ventura Blvd, Suite 507
Los Angeles, CA 91403

NEW YORK
230 Park Avenue, Suite 1000
New York, NY 10169

(888) 427-5505
www.globanet.com